



Capability Statement



about League

“We are trusted by South Australia’s most respected businesses to find them reliable, safe and skilled workers”

League has provided contract labour services to projects in South Australia and across Australia for the past seventeen (17) years.

We are a wholly owned South Australian company that has been in its current business format since 2002.

League's commitment to our customers is firm and total and we guarantee total resource investment in people, systems and energy required to meet and exceed targets for safety, environment and sustainability, quality and industry participation.

From our offices in Adelaide, Mannum and Gympie, League delivers projects throughout Australia and has extensive experience working on suburban, regional and remote projects.

our values

At League, our values act as a reference point for everything we do. We personally and professionally demonstrate these values in our actions, behaviours and decisions. This includes dealing with our customers, our teams, our community and suppliers.



safety
environment &
sustainability
mental health &
wellbeing

At League, we believe that safety is everyone's responsibility and a good safety culture is a mind-set. We foster a positive safety culture where all workers are encouraged to share ideas, learn from experiences, good and bad, and to speak up if something isn't right.

"Speak up if something doesn't feel right"

The League team promotes a forward-thinking approach to safety on all our projects.

League will understand and follow all customers' systems and processes and we look forward to initiating and participating in frequent Collective Insights.

environment and sustainability are at the forefront of our minds and we are passionate about working closely with the teams on the ground to achieve targets and promote sustainability for the project's lifecycle.

As an employer, League understands we have a unique opportunity on all projects to assist our customers to drive a **mental health and wellbeing** initiative for the workers, which we know will contribute to a healthier, happier workforce. League will be the first on board to drive the 5 Ways to Wellbeing Campaign and other Mental Health & Wellbeing initiatives for the duration of the project.

"drive the 5 Ways to Wellbeing"

proven experience and track record

League brings more than just core industry experience and a second-to-none customer focus – we are committed to the local communities in which we operate.

“second-to-none
customer focus”

Our recent clients include Fulton Hogan, Leed, Thiess and John Holland.

Roles we resource include but are not limited to

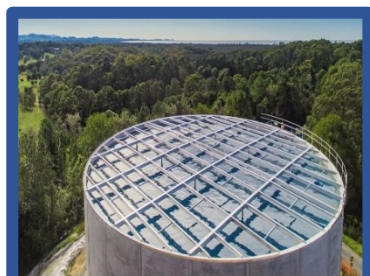
- Civil
- Mechanical
- Trades and Labour
- Site Services

Leed Engineering – Current projects

- Northern Adelaide Irrigation Scheme (NAIS)
- South East Flows Restoration
- Aldinga Waste Water Treatment Plant
- Snowy Hydro 2.0 Early Works

Fulton Hogan – Current Projects

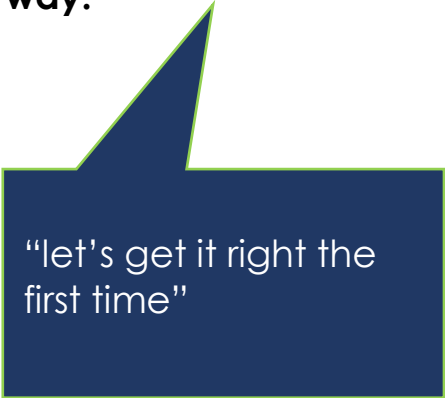
- Pike Floodplain Restoration
- Riverine



quality

All new starters complete League's own induction which includes a 'get it right the first time' quality component.

We encourage sharing the good work stories and the lessons learned along the way.



"let's get it right the first time"

recruitment and on-boarding services

All employees will be required to undertake our comprehensive end-to-end recruitment process.

The ability to attract and retain high-quality employees is a key differentiator for League. We deliver the *right* person for the role, not the *first*.

training, learning and development

League is committed to our local workforce and is excited to build a legacy of skills and competent workers by upskilling key groups and supporting future trainees and apprentices.

League boasts a robust on-boarding and New Starter Care process.

Employees who pass the initial pre-screening stage progress to formal face-to-face interview and if successful, will then become part of the on-boarding process, which includes regular on site visits and check-ins.

By developing and training our people, we maintain motivated and skilled people and League understands this is essential for any project to prosper.

League can offer to assist all project teams with facilitation of pre-start toolboxes for content with safety, environment and sustainability, mental health and wellbeing and construction.

The League team will continue to grow and learn and is delighted to be part of all learning initiatives and programs.

why league?

Our team is accountable, approachable and passionate about what we do.

Our communication is constant, and our values are reflected in our day to day operations.

With a tailored approach to a project's requirements, we will provide services that are flexible, cost effective and timely.

Our delivery team's key responsibilities are to:

Ensure total compliance to all standards, systems requirements and solve challenges and resolve issues in a timely, consistent manner. We will drive continuous improvement strategies and initiatives.

“we will ensure total compliance to all standards and systems’



our team

Gavin Ivey Director

Gavin has more than 30 years' experience in the labour hire /engineering industry, national account management experience and hands-on experience in managing the needs of Industry and Workforce Participation/Training requirements.

Suzi Ivey Training and Systems & Workforce/Industry Participation

With over 20 years' administration experience, a Cert IV in Training and Assessment and Lead Auditor qualifications, Suzi holds overall responsibility for industry and workforce participation, employees' mobilisation, inductions, on-boarding and project compliance training.

Yvonne Graham Payroll & Administration

Yvonne's extensive experience with payroll ensures all administration is up to date and accurate while also assisting the team with any day to day activities and requirements.

contacts

Gavin Ivey
M 0422 358 000
gavin@league.com.au

Suzi Ivey
M 0410 538 782
suzi@league.com.au

Yvonne Graham
M 0420 450 707
admin@league.com.au

our offices

Adelaide, SA
30 Whitmore Square Adelaide
T 1300 799 153

Mannum, SA
2 Virginia St Mannum, SA
T 1300 799 153
Gympie, Qld
T 1300 799 153